

LODESTAR®

ELECTRIC CHAIN MOTOR

CAPACITIES

125 kg to 2 tonne

LIFT

18 metre standard***

SPEEDS

1.5 to 30 metre/minute

VOLTAGES

1-phase & 3-phase available

From world touring rock concerts and Broadway musicals to Las Vegas shows and sporting events, the CM Lodestar is the trusted industry workhorse.

BENEFITS & FEATURES

IP 66 RATING

An Ingress Protection (IP) Rating of 66 indicates that the Lodestar offers protection from dust and high-pressure water – making this unit ideal for use in outdoor environments.

HIGH-PERFORMANCE COMPOSITE CORD GRIPS

Prevent water from entering the motor body at the pendant and power cord points of entry.

CONTINUOUS GASKETS

Create a waterproof seal between the gearbox assembly and the back frame and motor covers.

O-RINGS ON LIFT WHEEL BEARING

Prevent water from entering the motor body through the lift wheel opening.

5 POCKET LIFTWHEEL

Improved chain wear & smooth lifting.

CLUTCH OUTSIDE GEAR TRAIN

Meets international standards and is adjustable.

PRECISION HELICAL GEARING

For quieter operation.

REDESIGNED CONTROL PANEL

For easier access.

HEAVY DUTY DC BRAKE

Designed for a long service life, the brake location allows for quick access & easy inspection.

LOW VOLTAGE CONTROL

110 Volt for long cable runs without voltage drop. 24 & 48 Volt optional. (Low Voltage Unit Only)

DURABLE & LIGHTWEIGHT HOUSING

Cast aluminum. Black powder coated finish for low visibility.

GEARING

Helical design for long wear life and smooth operation.

LOAD CHAIN

Designed and manufactured by Columbus McKinnon. Zinc plated to protect against corrosion. Optional black finish available.

DUTY CYCLE

H-4 duty rated for heavy duty application. 2M+ FEM class. 50% Duty Cycle 300 operations for H-4. 240 for FEM per hour.

ELECTRICAL

Finger safe wiring meets all electrical codes. Quick change plugs allow for voltages 208 through 460. Prevents improper voltage connections which can cause hoist damage. (Low Voltage Unit Only)

ADJUSTABLE LIMIT SWITCH

Adjustable screw limit switch that will automatically stop the hook at any predetermined point when either lifting or lowering, preventing overtravel. (Low Voltage Unit Only)

OVERLOAD PROTECTOR

Designed to prevent lifting of excessive overloads. Helps prevent lifting of dangerous overloads.

METRIC RATED MEETS REQUIREMENTS

Meets or exceeds world standards.

ROAD READY

Easy to stow and travel.

LIFETIME WARRANTY

The industry's best.



OPTIONAL FEATURES

DOUBLE DC BRAKE

Two independent acting DC brakes for redundant braking. Field installation kit available.

AC ELECTRIC BRAKE

DOUBLE LIMIT SWITCH

Adjustable screw limit switch that will automatically stop the hook at any predetermined point when either hoisting or lifting.

ENCODERS

Available for positioning incremental and absolute.

VARIABLE SPEED UNITS AVAILABLE (VFD)

Varistar or variable speed versions available, please contact your CM-ET sales representative for details.

CM ALLOY LATCHLOK® HOOKS

Latchlok® hooks combine innovative design and solid allow steel. I-beam construction offers more reliable performance than any other hook on the market.

- One-hand operation and recessed push-button thumb release for smooth and dependable opening.
- Hook remains locked until released by the operator, even if chain goes slack.
- Sturdy forged heat treated I-beam construction for strong, yet lightweight hooks.
- Lifetime warranty.
- Made in U.S.A.

CHAIN BAGS

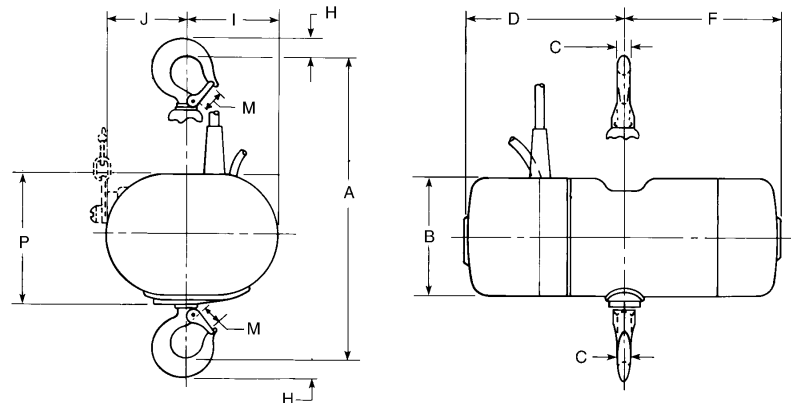
Cloth type bags easy-to-mount.

DIRECT CONTROL UNITS

The CM Lodestar is available as a Direct Control Unit. Featuring a single cable, this Direct Control Unit can be used as part of a system with multiple units with a single control. The Lodestar is compatible with most Direct Control Motor Controllers.

DIMENSIONS

Drawing Legend	Dimensions (mm)		
	D8 Series A, AA, B, C, E, F, H	D8 Series J, L, LL	D8 Series JJ, R, RR
B	154mm	194mm	194mm
C	17mm	22mm	29mm
D	297mm	253mm	253mm
F	225mm	329mm	329mm
H	25mm	30mm	38mm
I	107mm	145mm	179mm
J	113mm	176mm	142mm
M	25mm	28mm	33mm
P	168mm	208mm	208mm



SPECIFICATIONS

Type	Rate Capacity	Standard Lifting Speed at 50Hz	Operating Voltage	Single Phase Voltage	FEM Class	FEM Duty Factor	Chain Weight Per Metre Lift-EWL	Load Chain EN 818-7 (mm)	Power Consumption - Full Load	Reeves Fall of Chain	Motor HP	Protection Class	Noise Level
Model B	250kg	4m/min	400-3-50	optional	2M	50%	0.89kg	6.3 x 18.9	1.1A	1	1/4 HP	IP 66	68 db (A)
Model C	250kg	8m/min	400-3-50	optional	2M	50%	0.89kg	6.3 x 18.9	1.2A	1	1/2 HP	IP 66	68 db (A)
Model F	500kg	4m/min	400-3-50	optional	2M	50%	0.89kg	6.3 x 18.9	1.2A	1	1/2 HP	IP 66	68 db (A)
Model J	500kg	8m/min	400-3-50	-	2M	50%	1.42kg	7.9 x 21.7	2.3A	1	1 HP	IP 66	68 db (A)
Model JJ	500kg	16m/min	400-3-50	-	2M	50%	1.42kg	7.9 x 21.7	3.6A	1	2 HP	IP 66	68 db (A)
Model L	1000kg	4m/min	400-3-50	optional	2M	50%	1.42kg	7.9 x 21.7	2.3A	1	1 HP	IP 66	68 db (A)
Model LL	1000kg	8m/min	400-3-50	-	2M	50%	1.42kg	7.9 x 21.7	3.6A	1	2 HP	IP 66	68 db (A)
Model R	2000kg	2m/min	400-3-50	optional	2M	50%	2.84kg	7.9 x 21.7	2.3A	2	1 HP	IP 66	68 db (A)
Model RR	2000kg	4m/min	400-3-50	-	2M	50%	2.84kg	7.9 x 21.7	3.6A	2	2 HP	IP 66	68 db (A)

*** Lifts other than 18 metres available (Standard Units shipped less chain unless specified). Consult factory for additional speeds and capacities



AUTHORISED DISTRIBUTOR FOR COLUMBUS MCKINNON ENTERTAINMENT PRODUCTS

Symon Spiersweg 13A, 1506 RZ Zaandam, The Netherlands, Postbus 2118,1500 GC Zaandam, The Netherlands

Tel: +31 (0)75 650 47 50 | Fax: +31 (0)75 650 47 60 | www.lr.nl